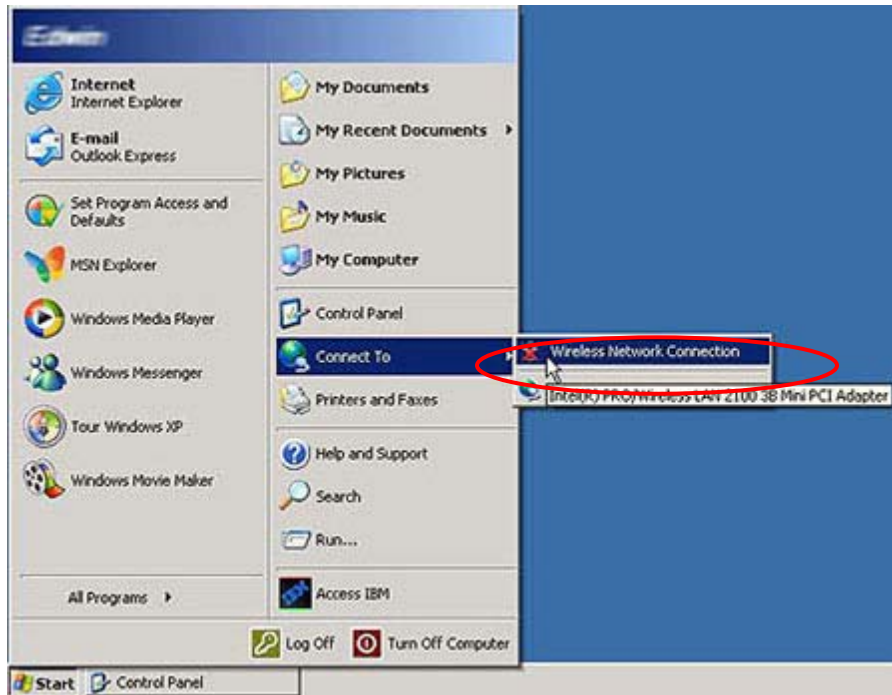
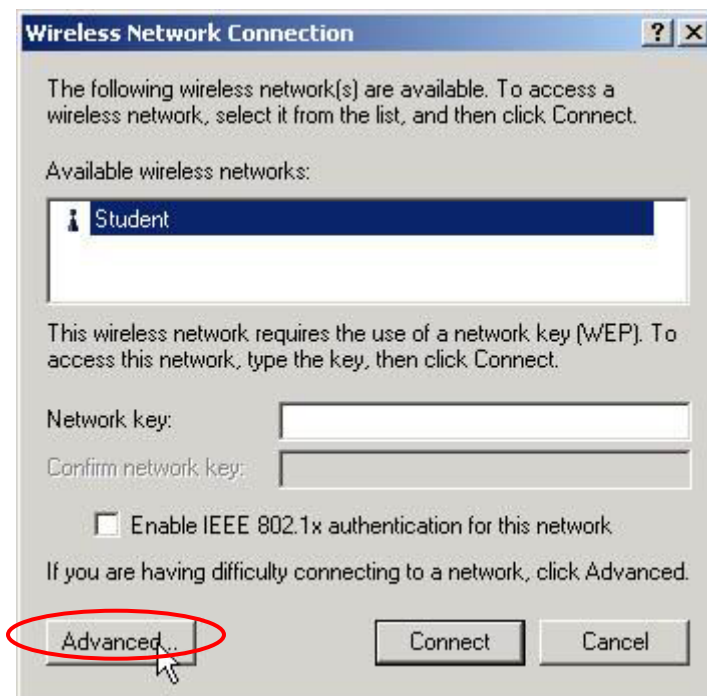


Setting Up Normal Profile on Centrino Win XP

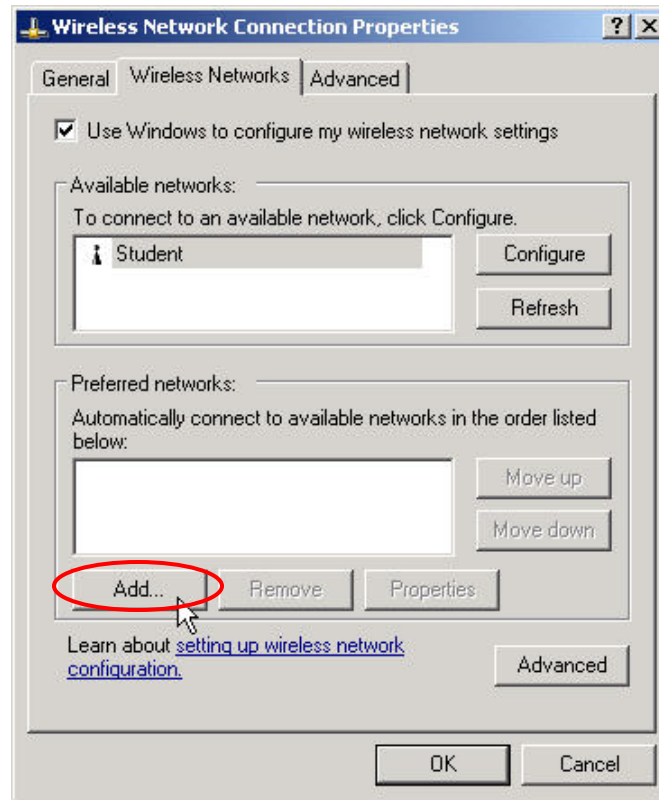
1. To access Wireless Network Connection, from the Window, selects **Start Menu -> Connect To -> Wireless Network Connection**



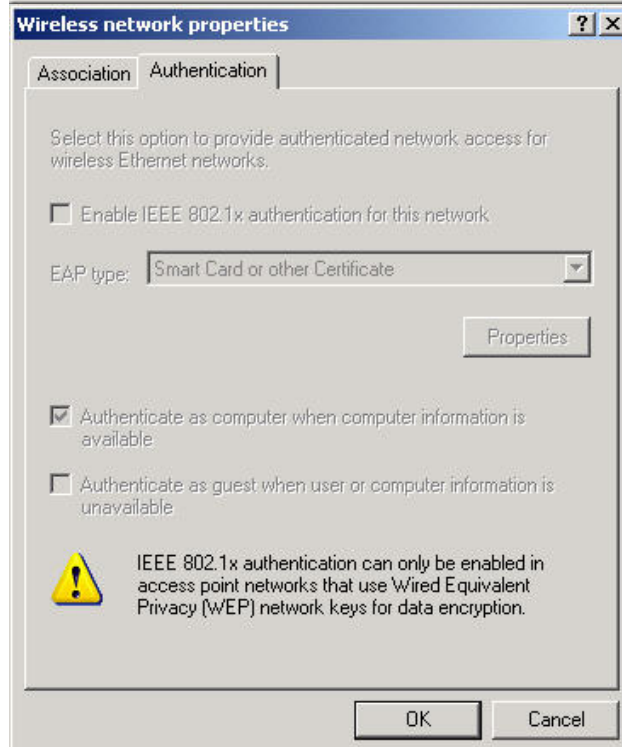
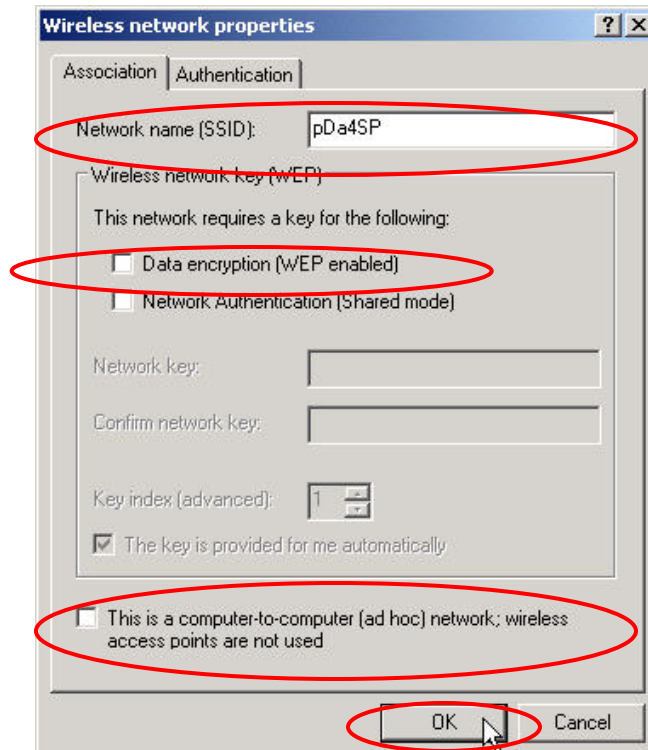
2. At Wireless Network Connection, select **“Advanced”** button to add a new wireless network.



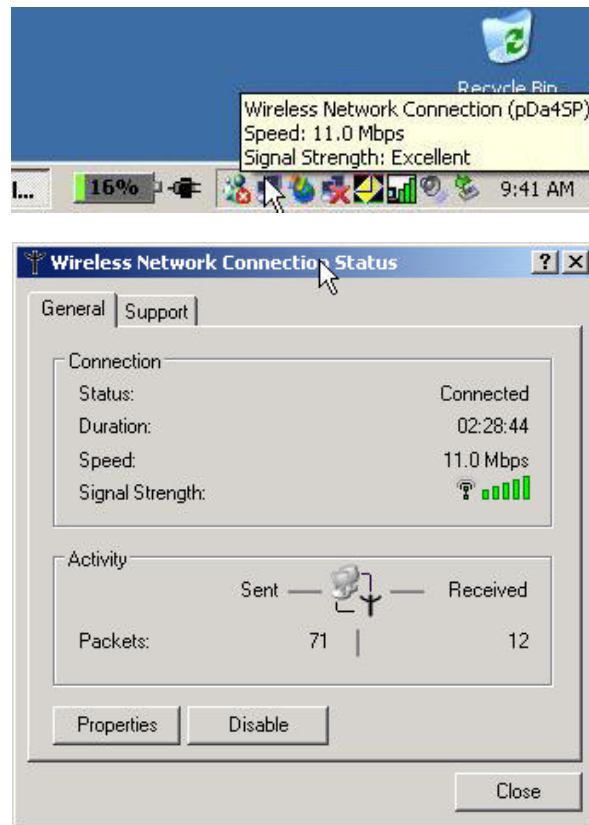
3. At Wireless Network Connection Properties, select “Add” button.



4. At Wireless Network Properties, Association tab.
 - a. Network name (SSID), enter “**pDa4SP**”
 - b. Uncheck “**Data encryption (WEP enabled)**”
 - c. Do not check on “**Computer-to-computer (ad hoc) network**”
 - d. Click on all “**OK**” button to apply the new setting

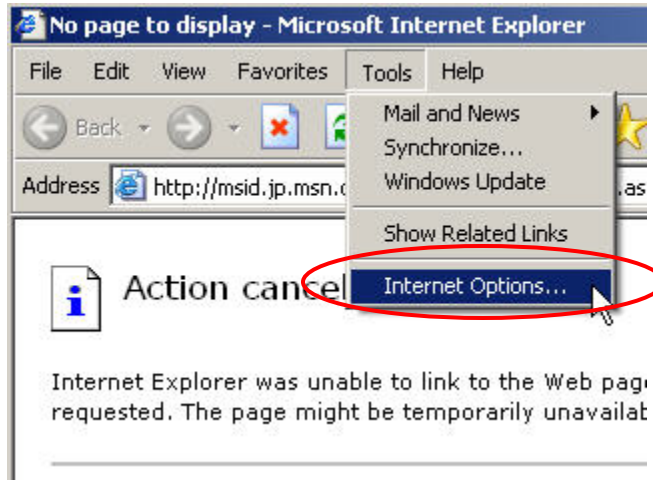


5. To check the connection status, from WinXP taskbar (button right corner of the window), click on **“Wireless Network Connection Status for pDa4SP”**.

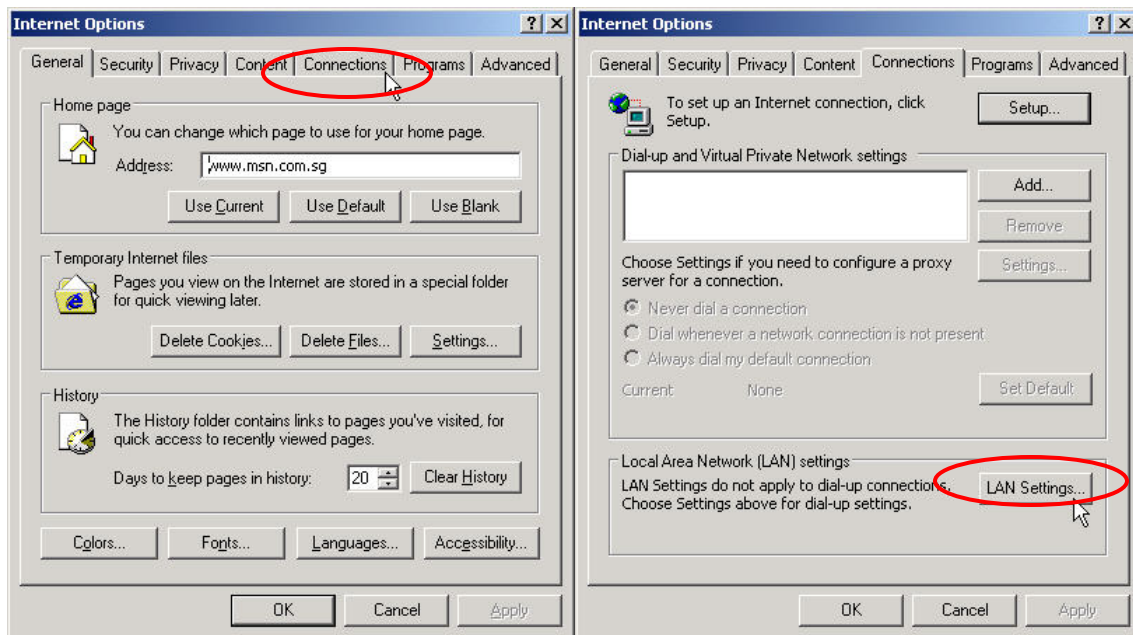


Setting up Microsoft Internet Explorer.

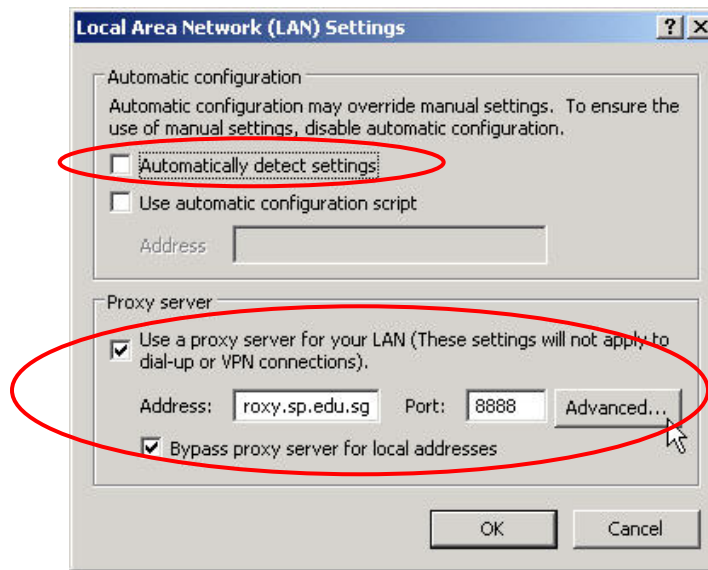
1. Launch Internet Explorer.
From the top menu, select **Tools → Internet Options...**



2. On the "General" tab of Internet Options, select on "Connections" tab.
On the "Connections" tab, click on **"LAN Settings..."**



3. To configure your Local Area Network (LAN) Settings:
 - a) In Automatic configuration, uncheck on “**Automatically detect settings**”
 - b) In Proxy server, check on “**Use a proxy server for your LAN ...**”
 - i. Address, enter “**proxy.sp.edu.sg**”
 - ii. Port, enter “**8888**”
 - iii. Check on “**Bypass proxy server for local addresses**”
 - iv. Click on “**Advanced**” button for further proxy setup.



4. At the Exceptions part of Proxy Settings, enter “**164.78.***”.
Click on all “**OK**” button to end the configuration.

