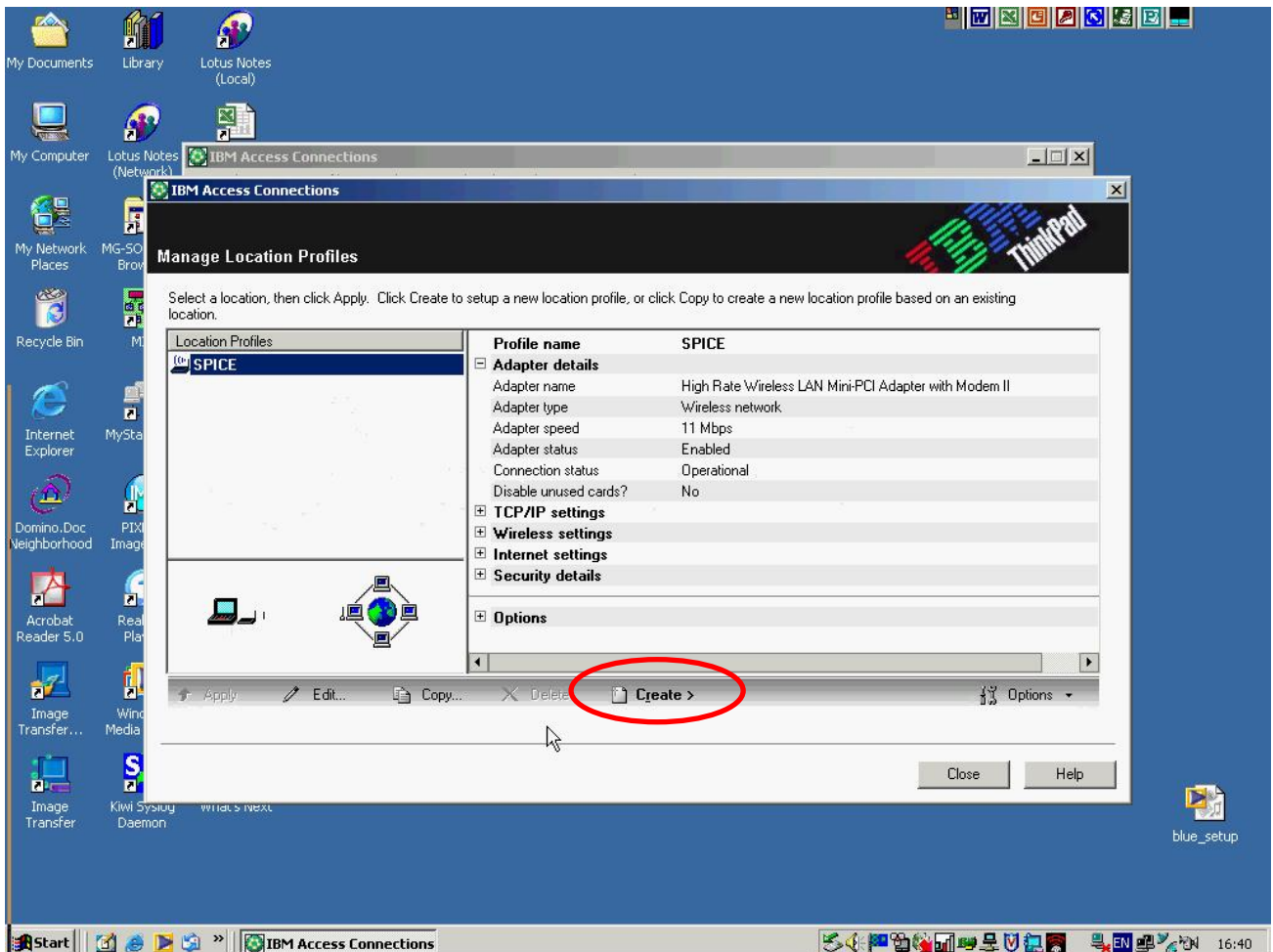


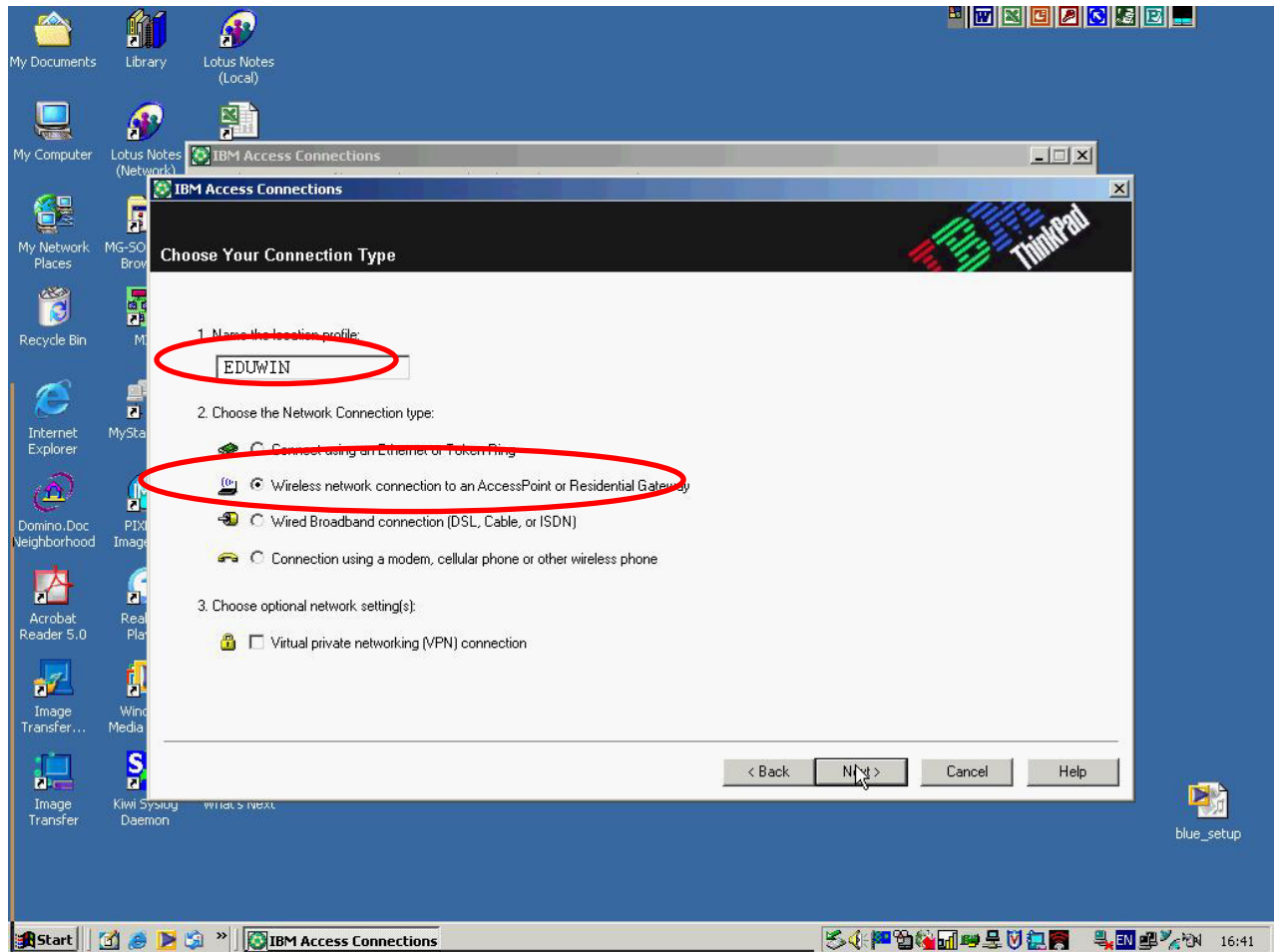
Setting Up EDUWIN Profile on IBM T30 (with Built-in WLAN Adapter)

1. Open your IBM Access Connections from your **Start Menu -> Programs -> ThinkPad -> IBM Access Connections**
2. Click on **Create** to create a new profile

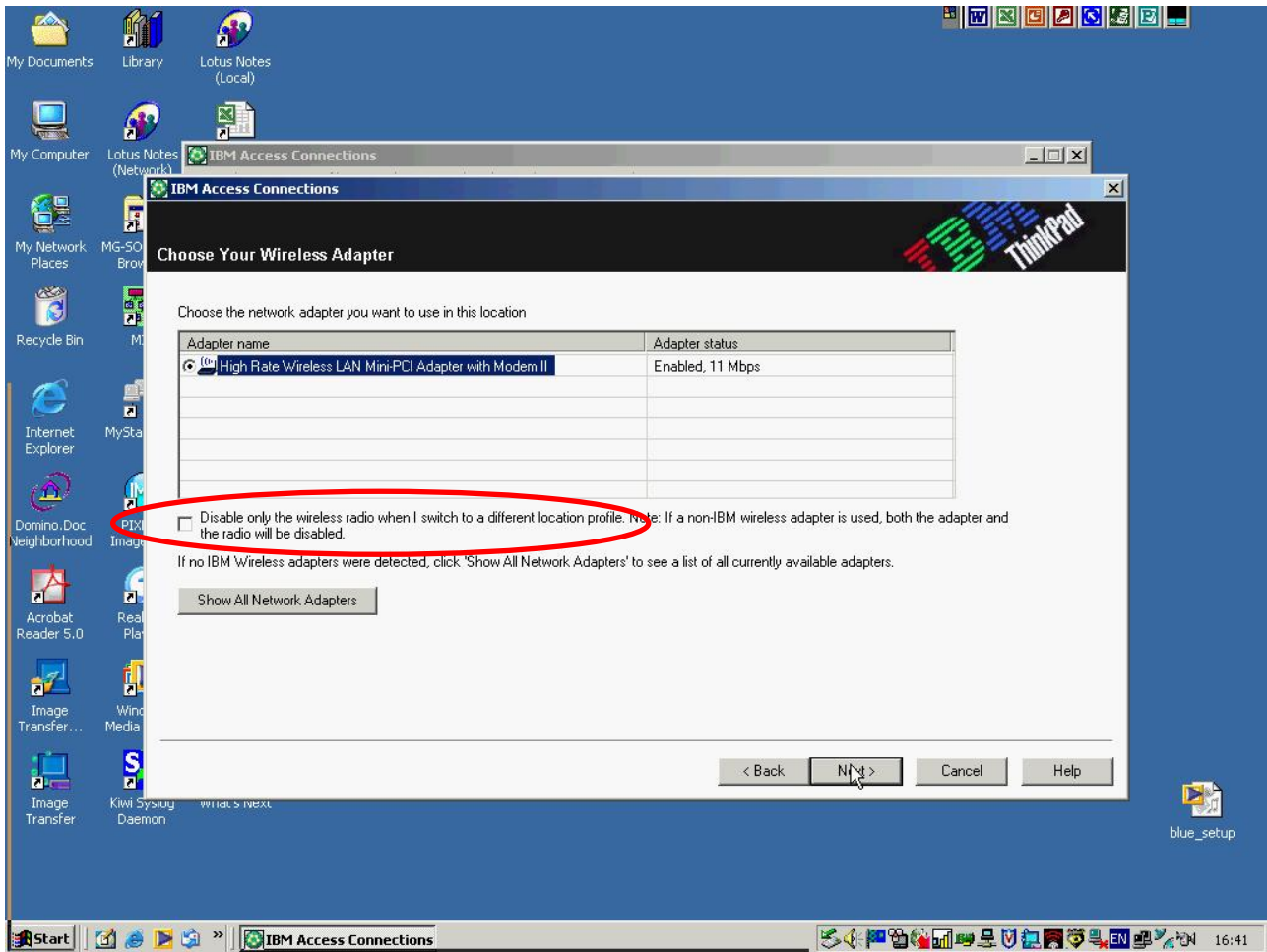


3. Enter **EDUWIN** as the location profile.

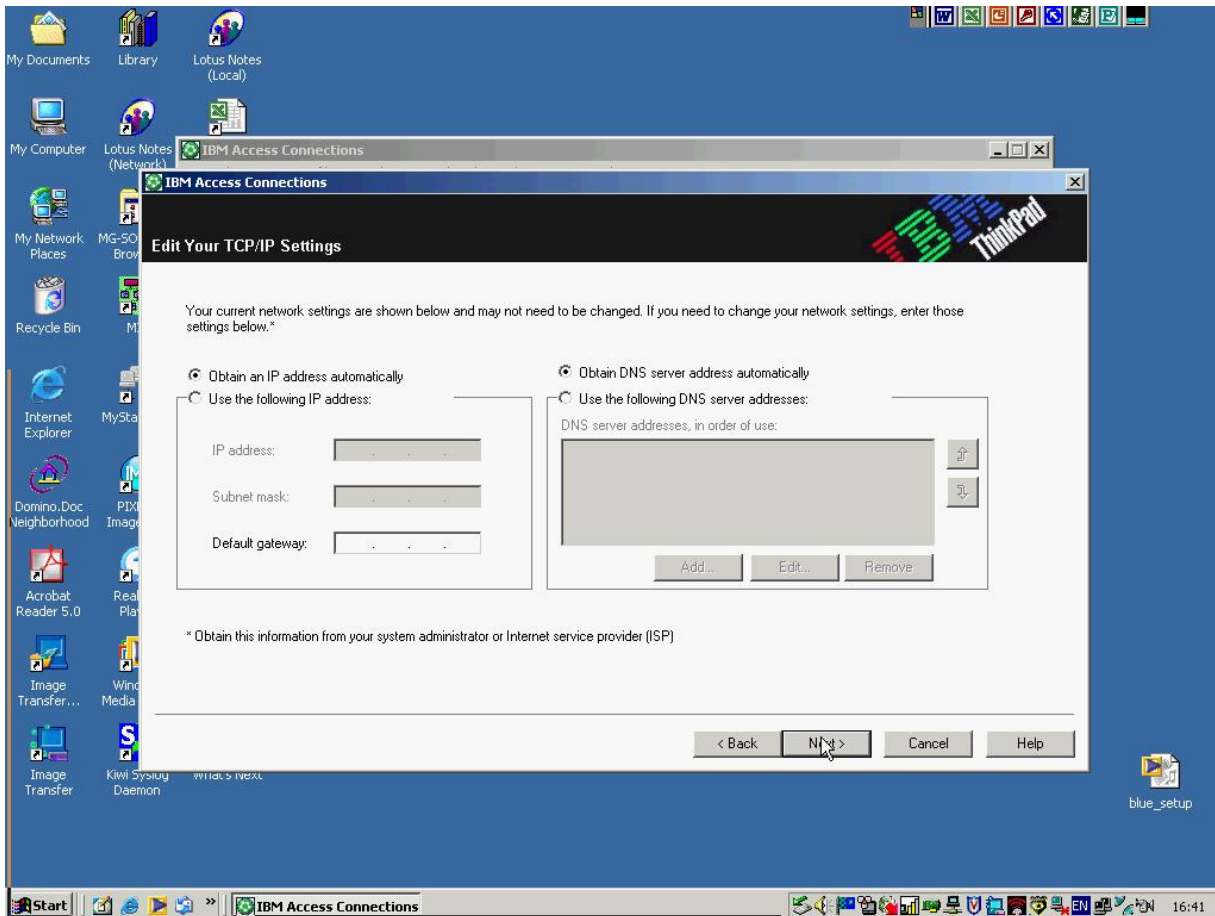
4. Choose **Wireless network connection to an Access Point or Residential Gateway**



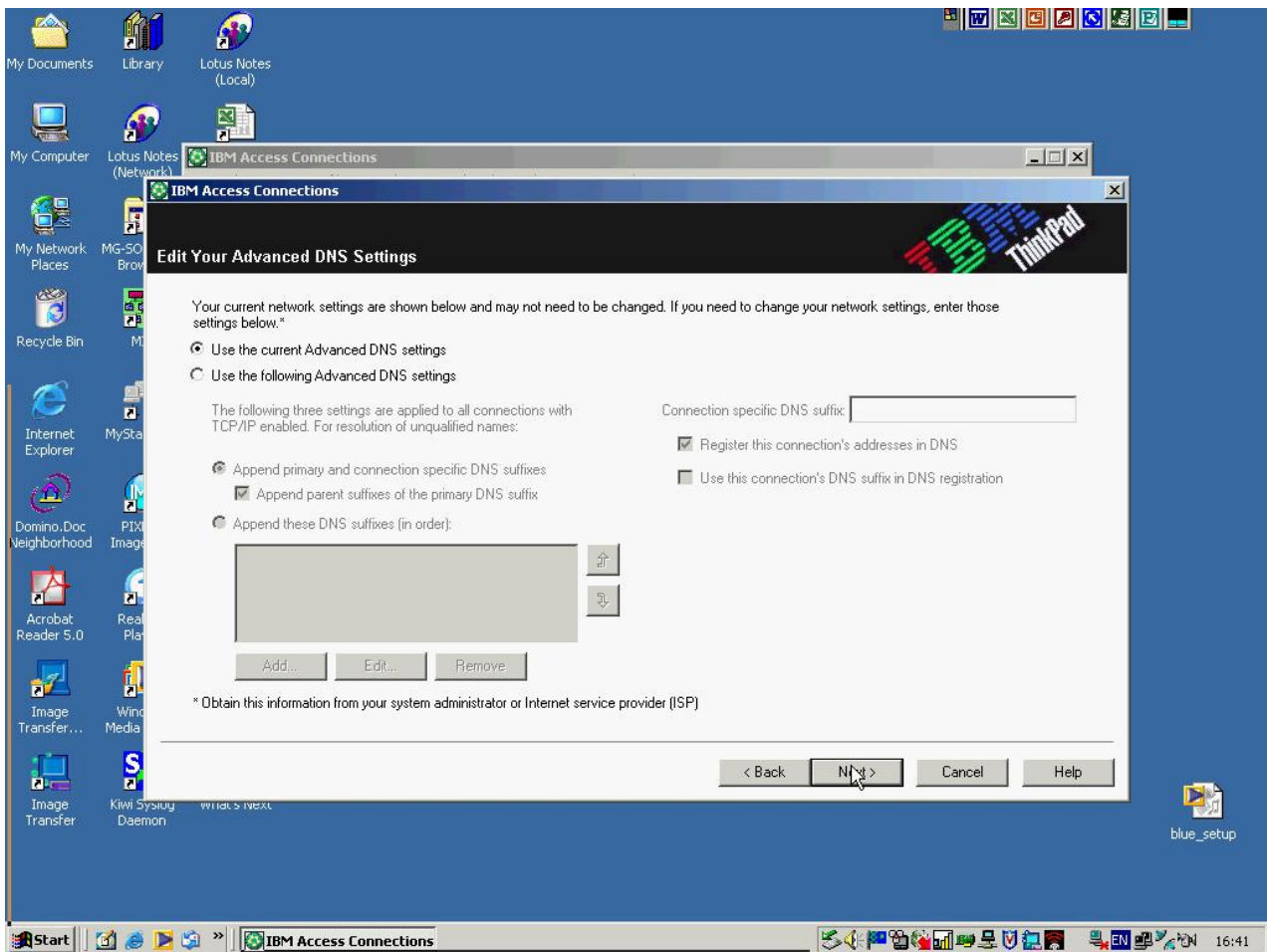
5. Choose the network adapter to be used. Please do not click 'Disable only the wireless radio when I ...'



6. Leave the TCP/IP Settings to default.



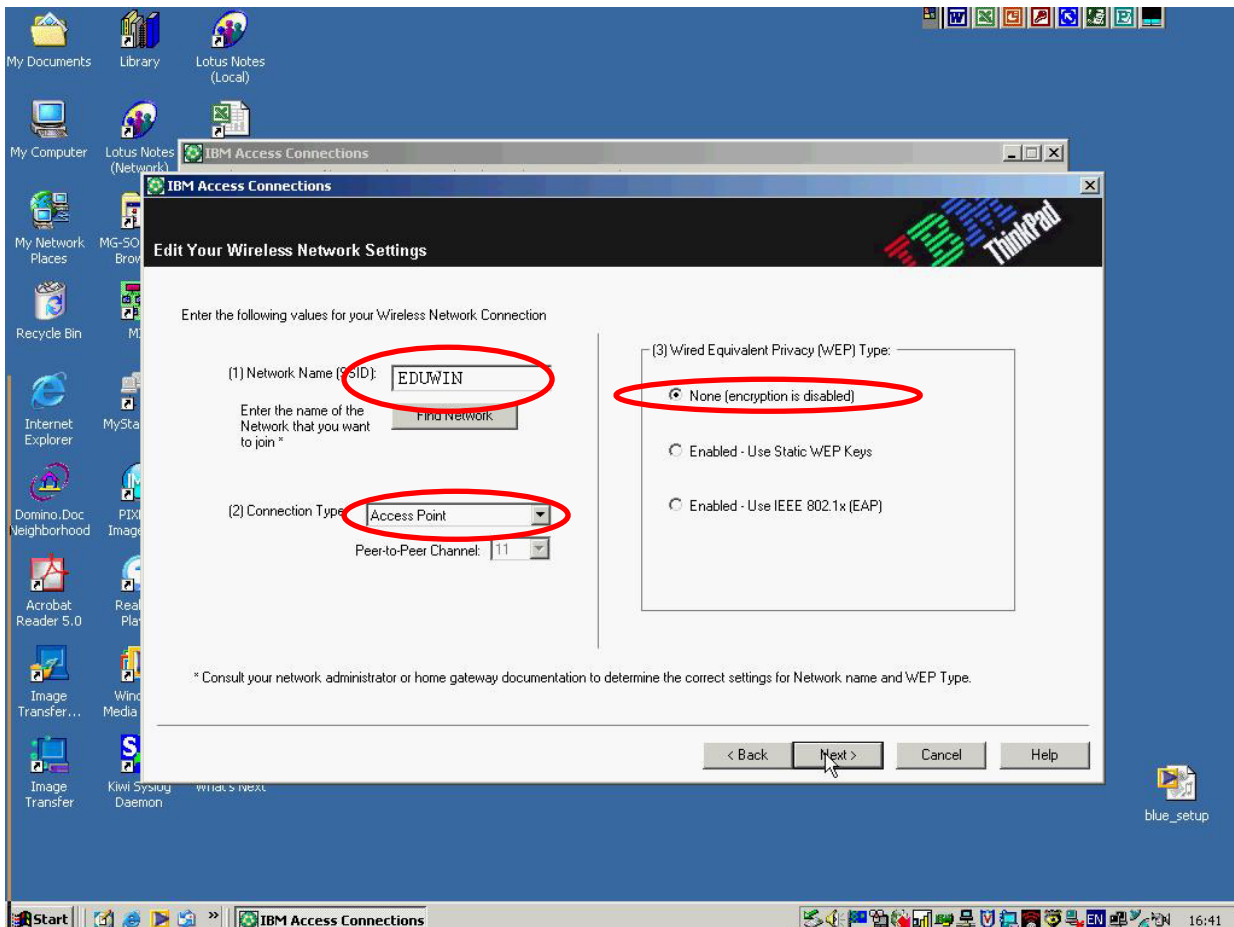
7. Leave the Advanced DNS Settings as the default.



8. Enter **EDUWIN** under the **Network Name (SSID)**.

9. Select **Access Point** under the **Connection Type**.

10. Select **None (encryption is disabled)** for **Wired Equivalent Privacy (WEP) Type**.



11. Leave all other settings to default.

12. At the end, remember to **Save** your profile.

