

# Quick Start Guide for EDUWIN Profile Users

---

## Step 1 - Configure the Wireless LAN adapter for SPWireless

You are expected to be able to join to SPWireless as per Normal Profile before you proceed with the EDUWIN – IHL Wireless Roaming Configuration.

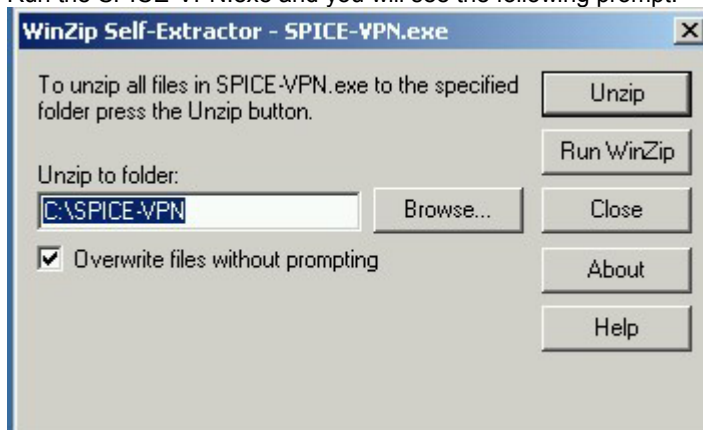
---

## Step 2- Configure the Wireless LAN adapter for EDUWIN

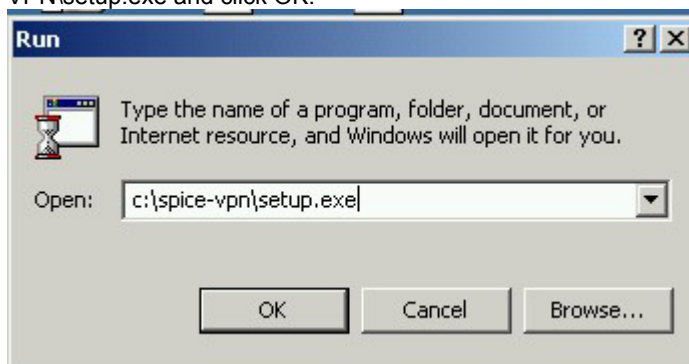
- Set the Network Name or SSID/ESSID of your wireless LAN adapter to **EDUWIN**.
  - Ensure that you are configured to be in **"Infrastructure Mode"**.
  - Ensure that your Transmit Rate and Frequency Channel settings are configured to be in **"Auto"**.
- 

## Step 3- Install the SPICE VPN client for EDUWIN

- Note: SPICE VPN client is meant for Windows 95/98/ME/2000/XP.
- Download the installation package (SPICE-VPN.exe) and save it to your harddisk.
- Run the SPICE-VPN.exe and you will see the following prompt:



- Select "Unzip" and the installation files will be unzipped to the default folder C:\SPICE-VPN.
- Start the installation by clicking the "Start" button → "Run..." button. Type C:\SPICE-VPN\setup.exe and click OK.



- The installation package will automatically install itself and you will be prompted to reboot towards the end of the installation. The system needs to be rebooted to complete the VPN installation.

---

#### Step 4- Connect to an Access Point

- Verify that you are in the coverage area of an Access Point that supports **EDUWIN** in the host IHL's Wireless Network. Please visit the IHLs' wireless web site that you are visiting for more info:

NUS <http://www.nus.edu.sg/winzone/locations/locations.htm> (ready)  
NTU (EDUWIN - not ready)  
SMU (EDUWIN - not ready)  
NP (EDUWIN - not ready)  
TP (EDUWIN - not ready)  
NYP (EDUWIN - not ready)  
RP (EDUWIN - not ready)

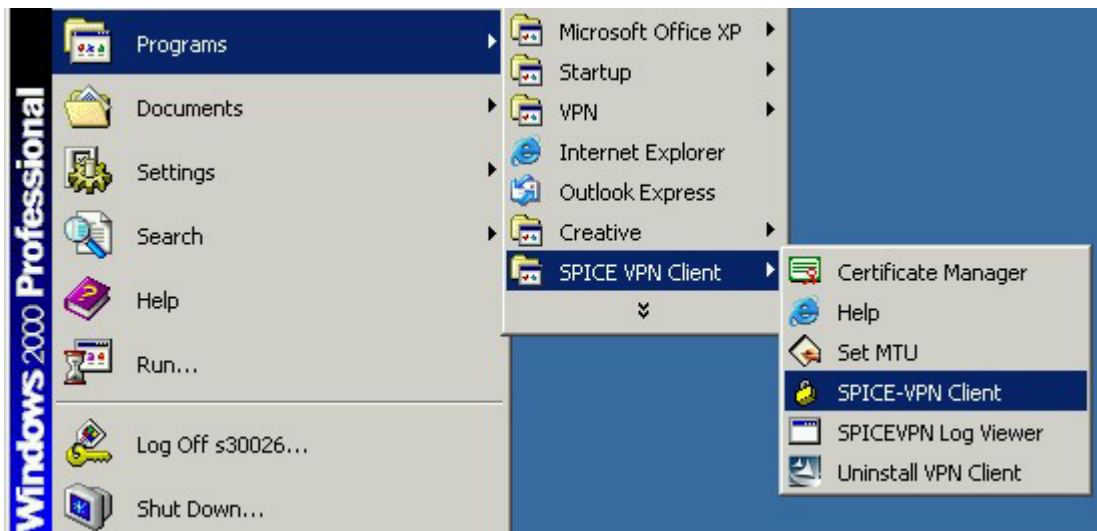
- If you have correctly configured your Wireless LAN adapter, you will automatically connect to the Access Point once you are in the coverage area.
- 

#### Step 5- Obtain an IP address

- If you have successfully connected to an Access Point, you will be able to obtain an IP address.
- 

#### Step 6 - Launch SPICE VPN Client for EDUWIN

- Launch SPICE VPN Client from:



- Make sure you are using EDUWIN VPN profile as shown in the Connection Entry:



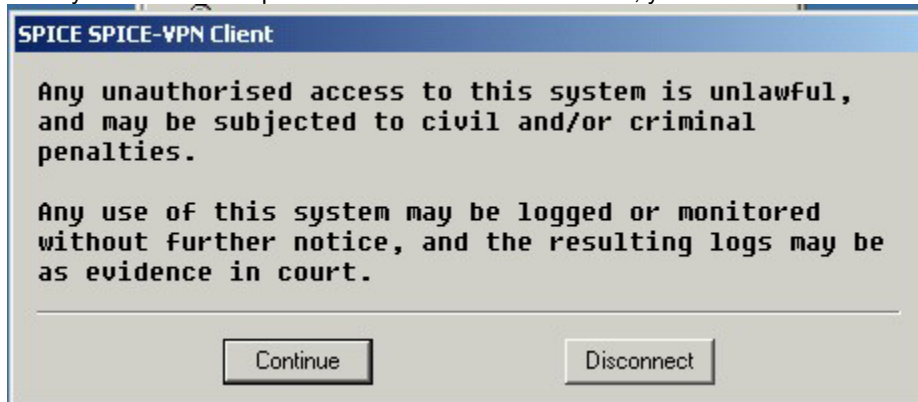
- Click “Connect” and the VPN Client will negotiate with SPICE VPN Concentrator.



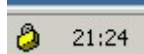
- Next, you will see the user authentication prompt. Key in your SPICE account & Password. If you are student, your Domain is **SD**. For staff, your Domain is **SF**.



- Once your account and password have been authenticated, you will see the welcome prompt:



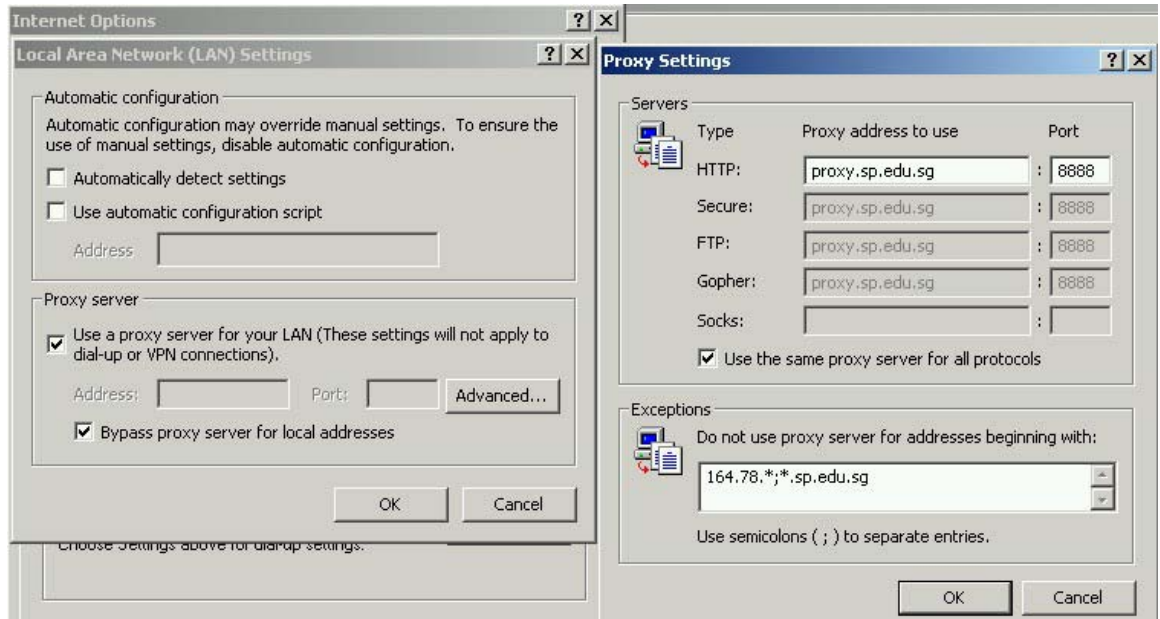
- When you press the "Continue" button, you will see the VPN icon "key" symbol in the system tray:



---

#### Step 7- Configure the Internet Explorer Proxy

- Internet Explorer needs to be configured for **SP proxy** in order to access the internet. Open the IE Menu, Tools → Internet Options → Connections → LAN Settings. Make sure the Proxy Server checkbox is "ticked" and include the following settings in the "Advanced" button:



The proxy settings are “**proxy.sp.edu.sg**”, port “**8888**”. Exclude “**164.78.\***” and “**\*.sp.edu.sg**”

- The above setting will direct all your internet traffic from the host IHL to SP internet service.