

## Procedure on how to connect your Mac OS to join Staff Secure Profile (SPStaff)

Step 1 – Click on the “Airport icon” and select “SPStaff” from the drop down menu.

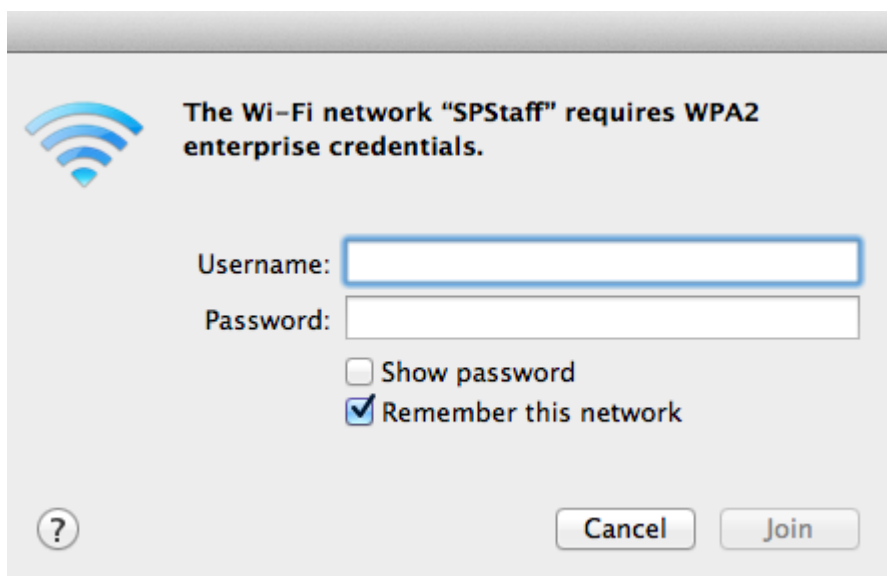


Step 2 – At the authentication pop up box, key in User Name and Password.

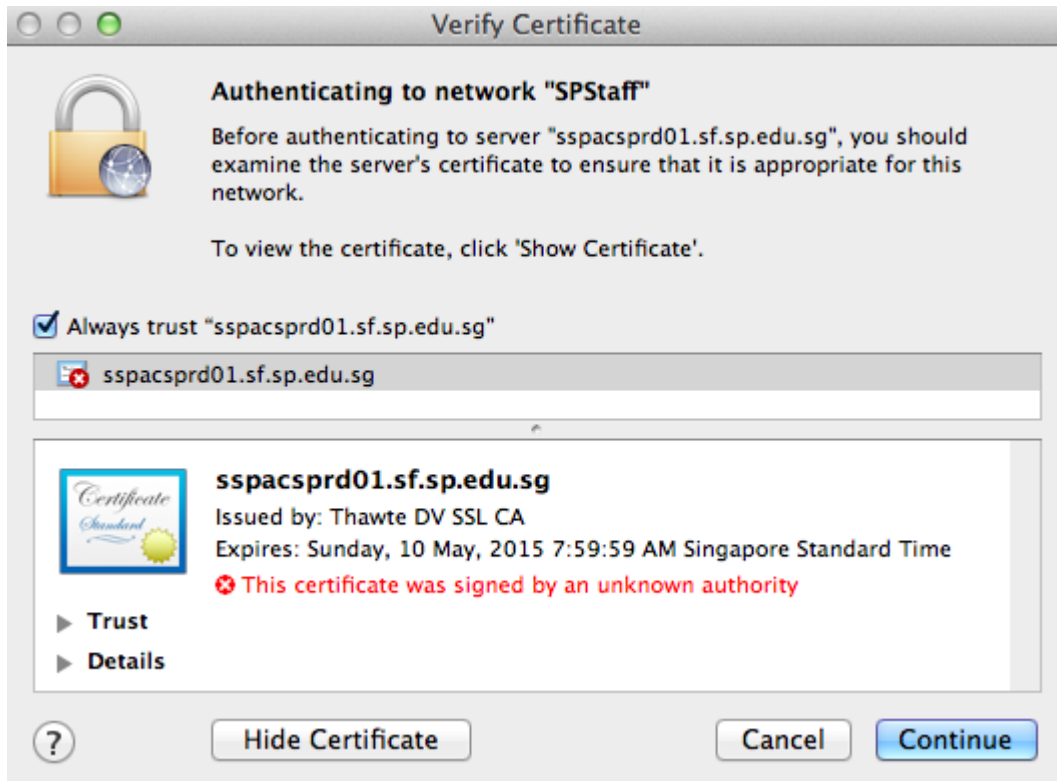
Eg: User Name: sf\sXXXXXX or sXXXXXX.

For 802.1X remain as Automatic, check box for Remember this network is selected.

Click OK.



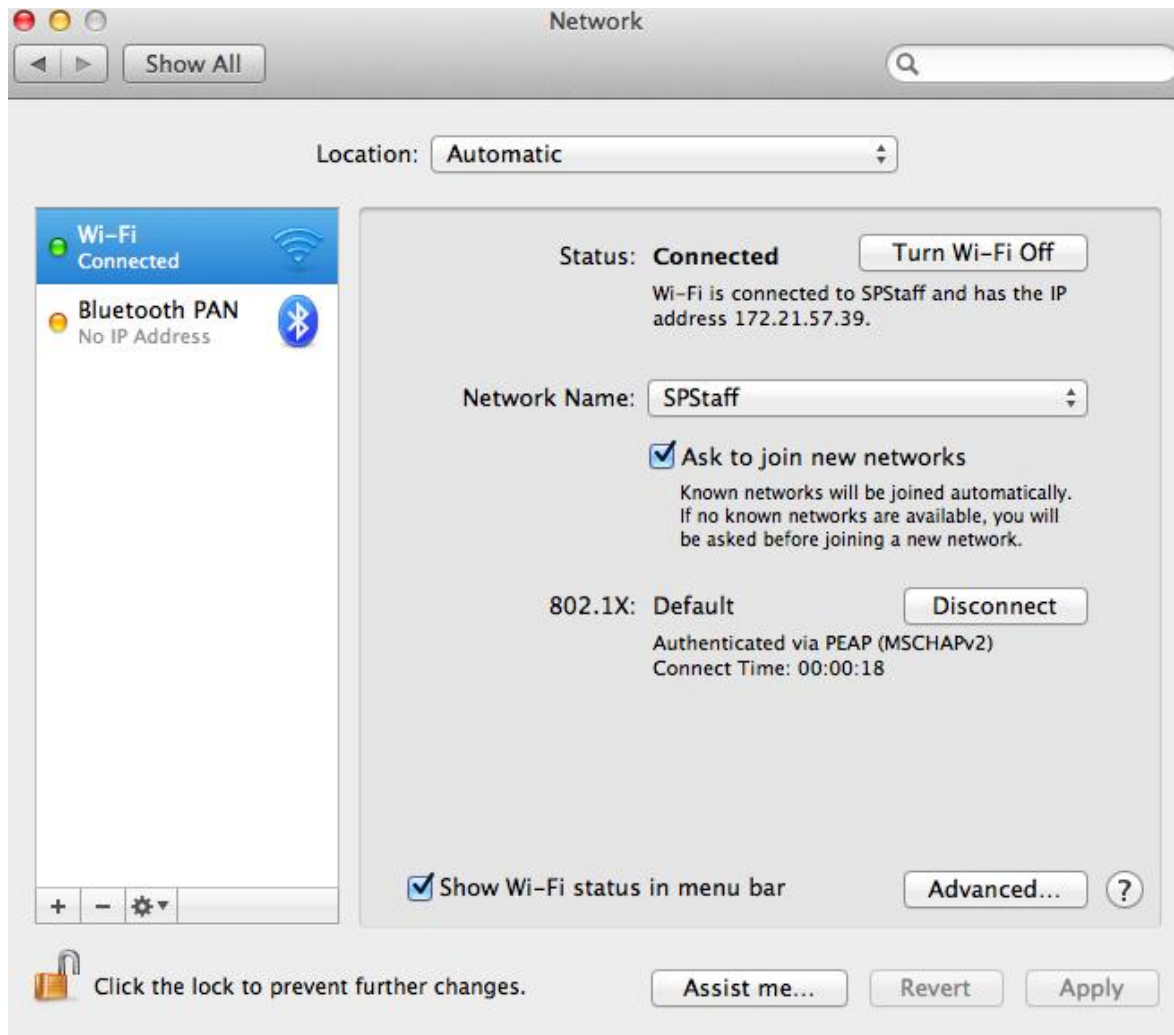
Step 3 – When prompted with certificate pop up alert, click “Show Certificate” and check ‘Always trust sspxxxxx...’. Click “Continue”



Step 4 – Key in your administrator password for keychain, the certificate will then be installed. Click OK.



Step 5 – Click on “Airport icon” and select “Open Network Preference”, Airport network status shows Connected and an IP address has been issued.



## Step 6 – Launch Safari to access the Internet

