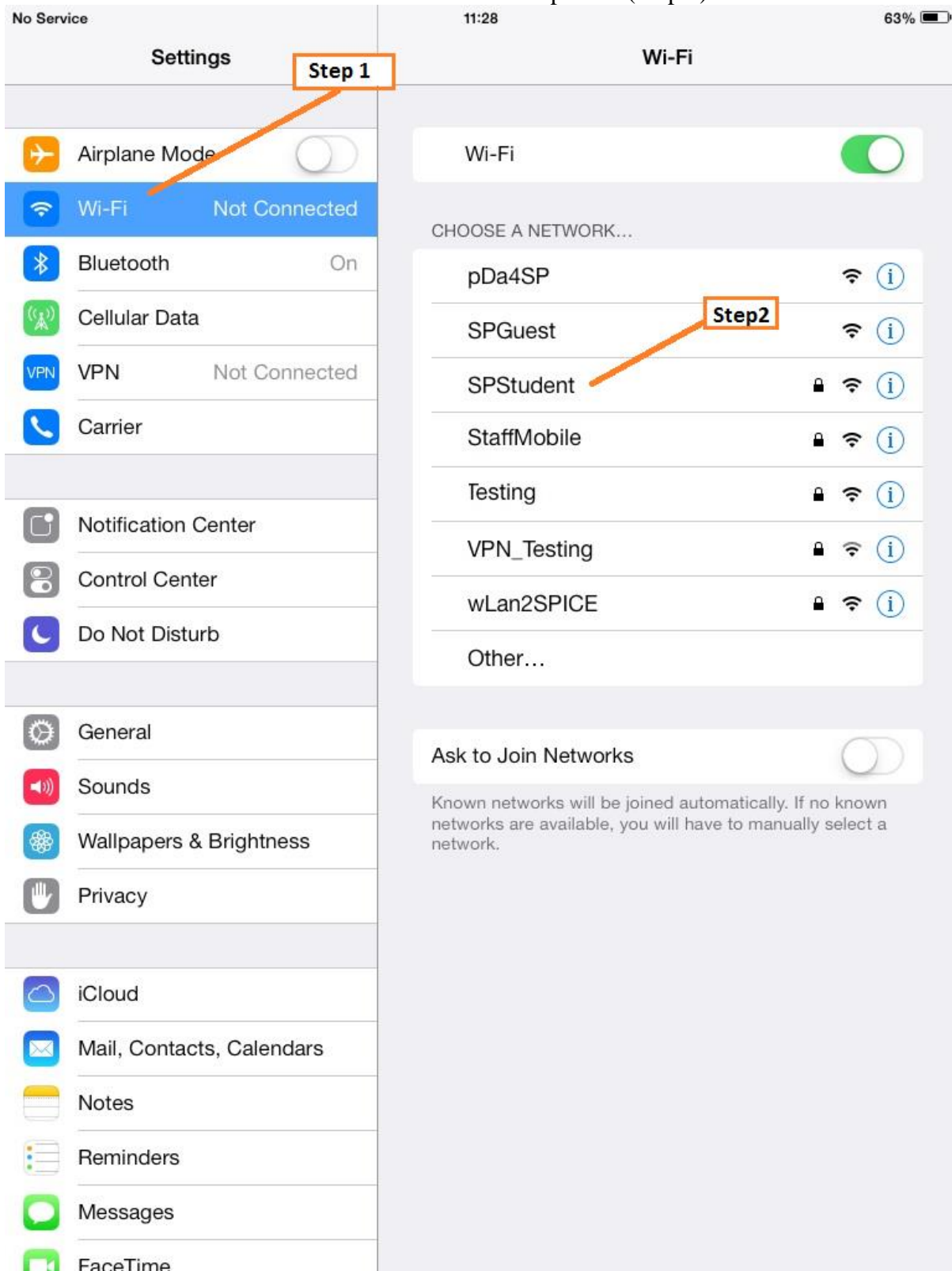


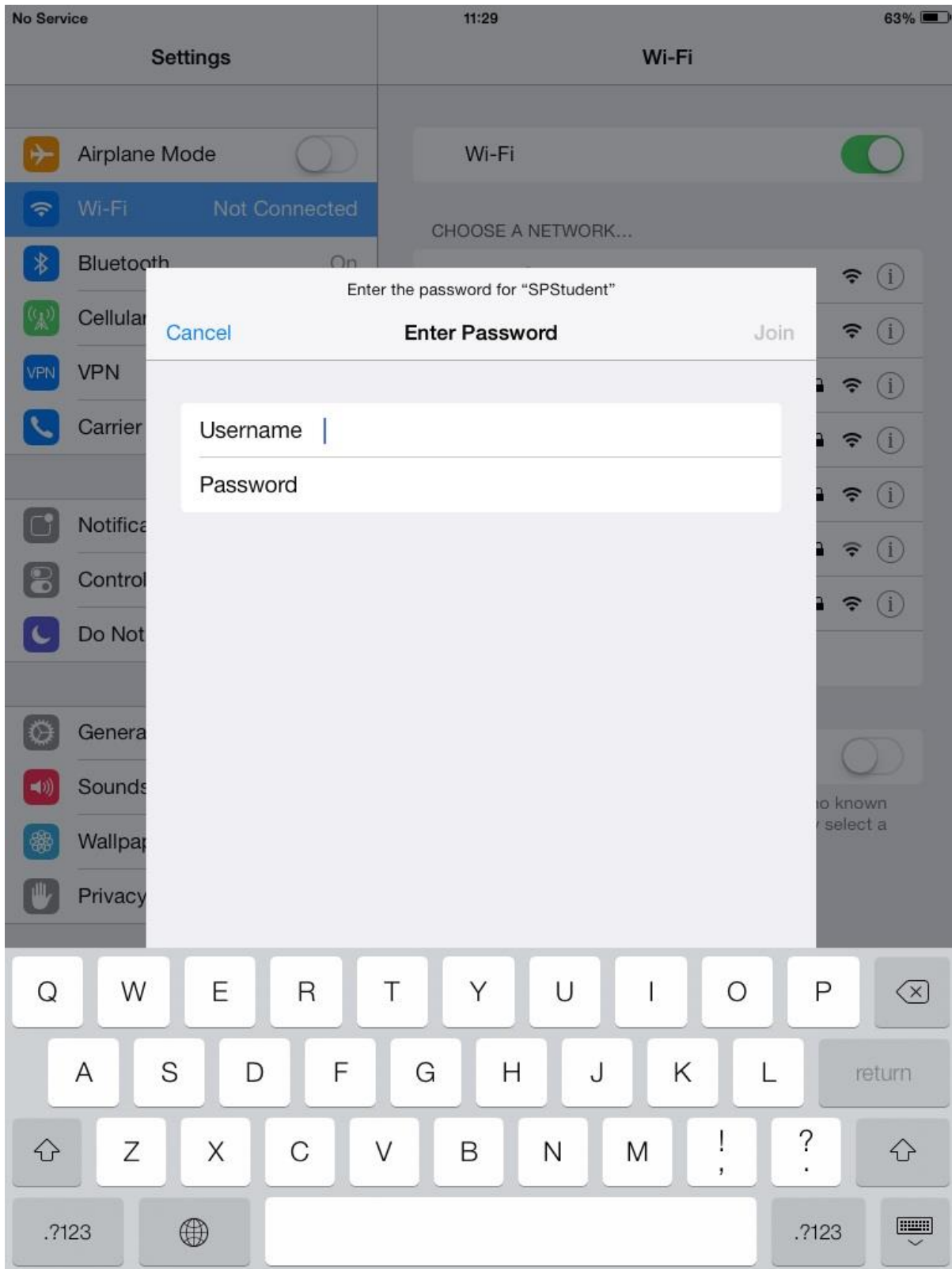
Procedure on how to connect your iPad to join Student Secure (SPStudent) Profile

- Double tap on the “settings” icon at the iPad,
- Double tap on the “Wi-Fi” icon as shown in the below picture (Step 1)
- Tab on the “SPStudent” icon as shown in the below picture (Step 2)

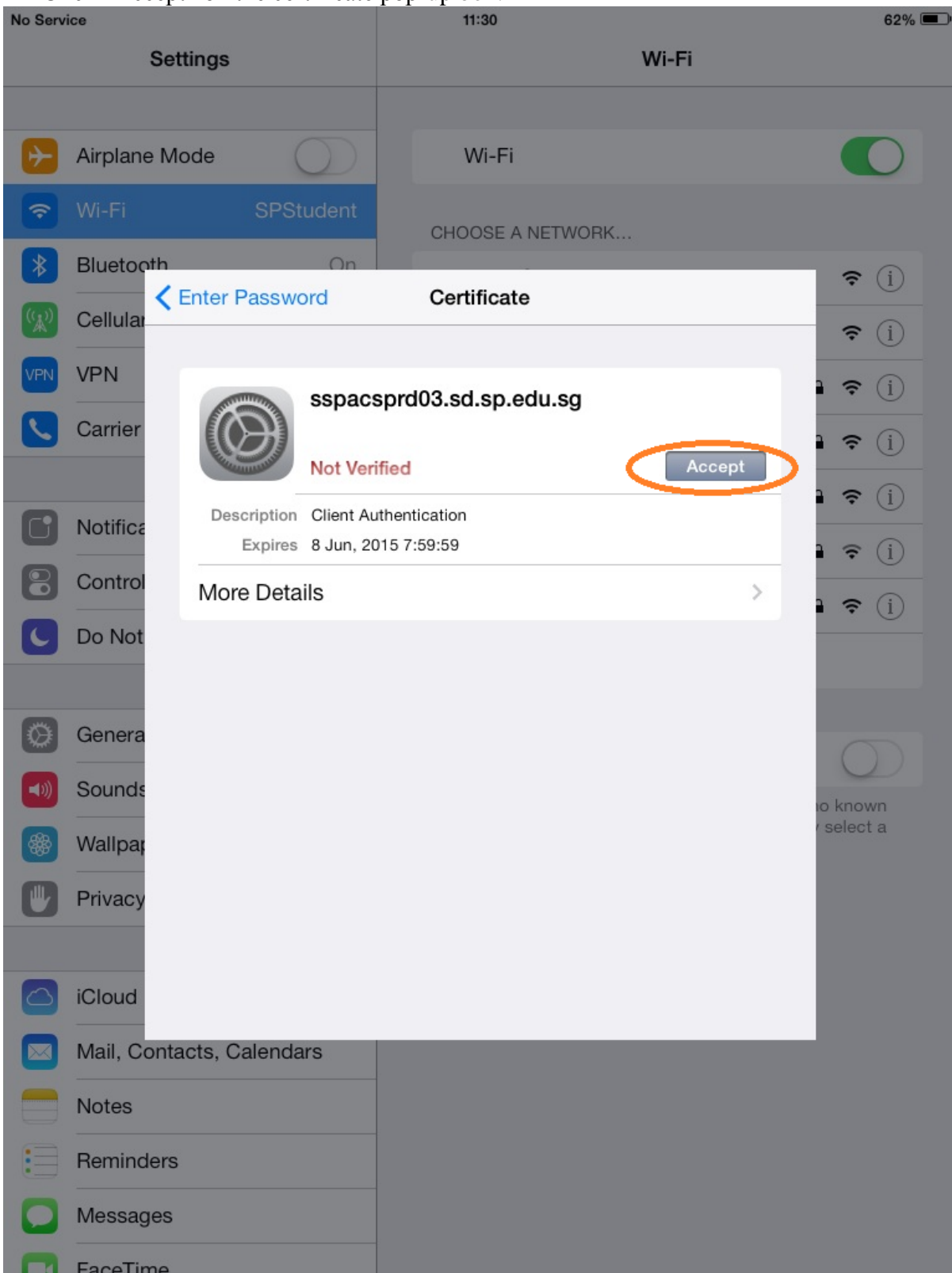


- Key in your Spice student ID and password in the pop-up box. Click “OK” to proceed.

Eg: User Name: pXXXXXXXX or sd\pXXXXXXXX



- Click "Accept" on the certificate pop-up box.



- Double tap on the “Wi-Fi” icon again and you should see that you are connected to SPStudent profile as shown in the picture below.

