

## Procedure on how to connect your Mac OS to join Student Secure Profile (SPStudent)

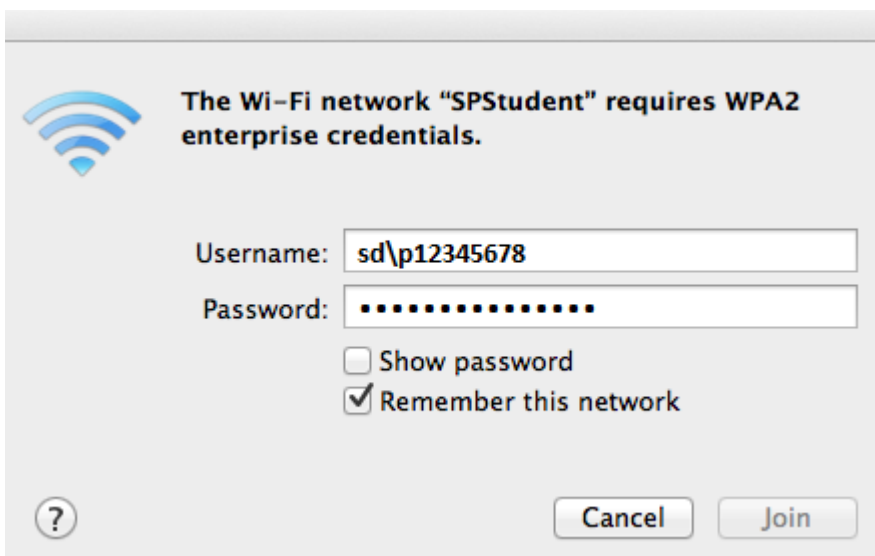
Step 1 – Click on the Airport icon and select “SPStudent” from the drop down menu.



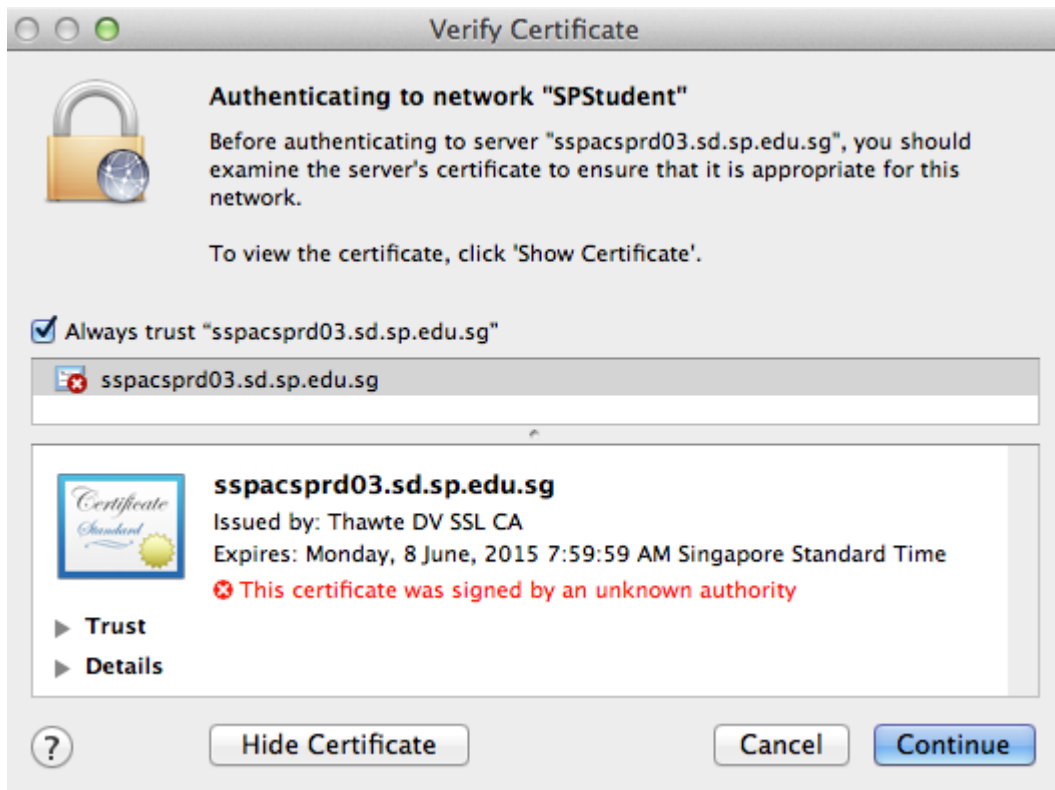
Step 2 – At the authentication pop up box, key in User Name and Password.

Eg: User Name: sd\pXXXXXXXX or pXXXXXXXX.

For 802.1X remain as automatic, check box for “Remember this network” is selected. Click “Join”.



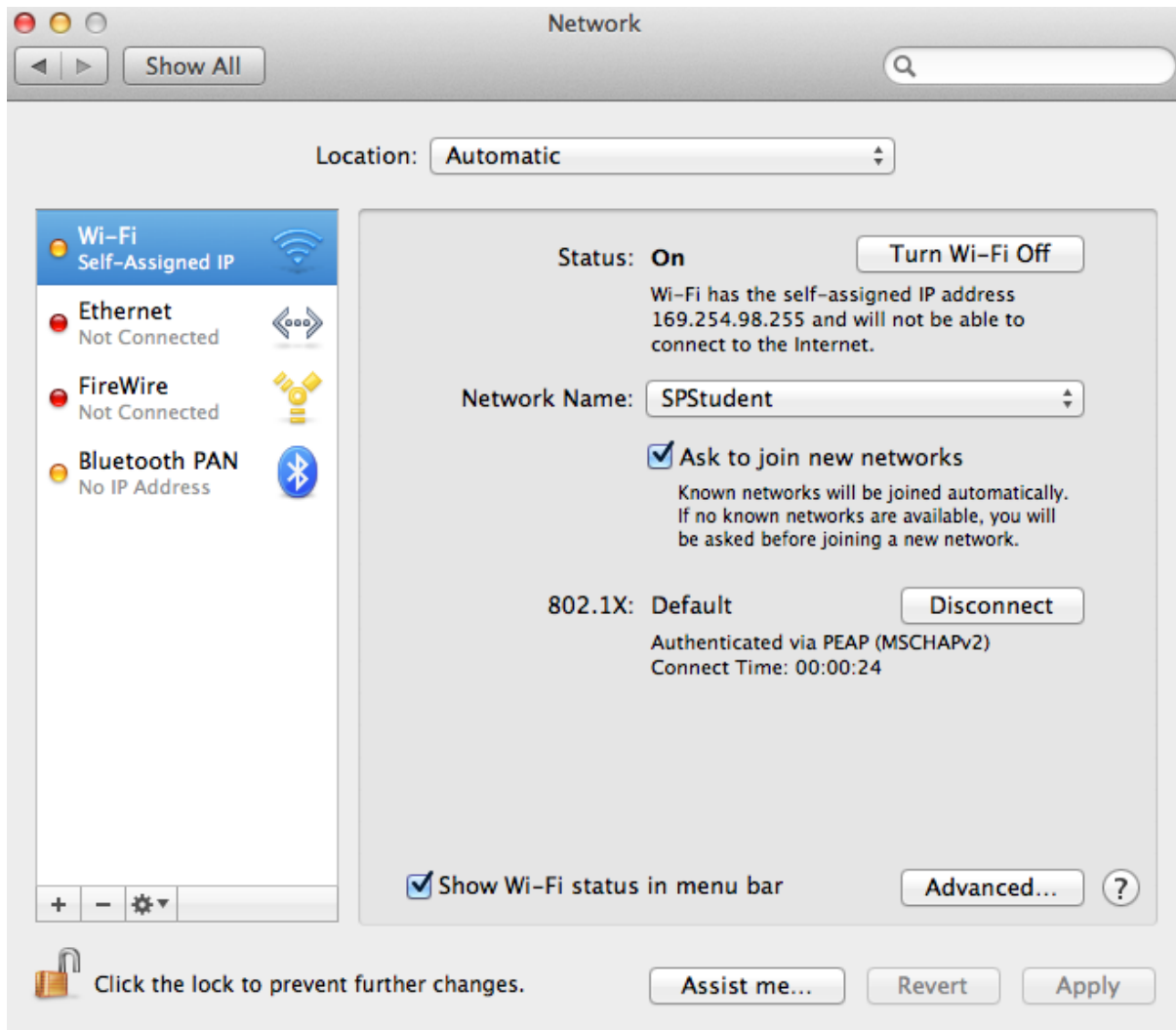
Step 3 – When prompted with certificate pop up alert, click “Show Certificate” and check “Always trust sspxxxxx...” Click “Continue”



Step 4 – Key in your administrator password for keychain, the certificate will then be installed. Click “Update Settings”.



Step 5 – Click on “Airport icon” and select “Open Network Preference”, Airport network status shows Connected and an IP address has been issued.



Step 6 – Launch Safari to access the Internet.

