

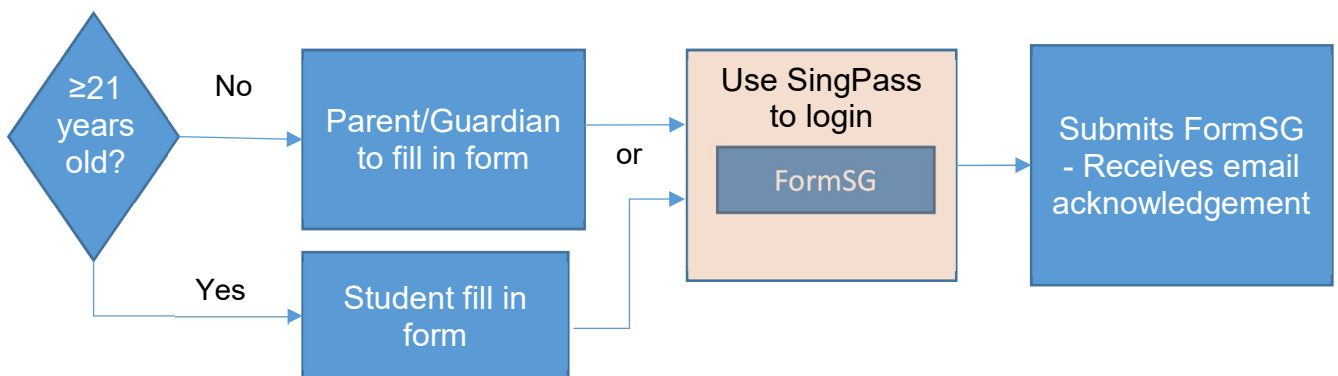
# PSEA Standing Order

## 1) Students using own PSEA

- a) Please submit FormSG PSEA Standing Order via:
- <https://go.gov.sg/psea-p1s> or
  - Scan this QR Code



- b) Workflow for FormSG PSEA Standing Order:



## 2) Students using siblings' PSEA

Please submit **hardcopy** Standing Order Form. You can:

- Print the Standing Order form from PSEA website:  
<https://go.gov.sg/psea-so-hardcopy> or
- Obtain the hardcopy form from One Stop Centre located at Block T16 Level 1