

SP

EMBARK ON YOUR TRANSFORMATION JOURNEY

- sp.edu.sg/industry
- span@sp.edu.sg
- Singapore Polytechnic
- Singapore Polytechnic

January 2024 Edition

TECHNOLOGY INNOVATION & CONSULTANCY CENTRES

SP positions itself as an industry-relevant polytechnic that is proactive and responsive to the industry's needs. Our 12 SP centres are designed to help SMEs enhance their productivity, innovation, and talents for the industry. This is through multi-disciplinary and cross-functional projects between SP and our industry partners, allowing them to move up the value chain.

This "Total Package" enables us to spearhead the quest for technology, innovation and information so the industry can attain progress as a whole.

Industry Sectors

FOOD MANUFACTURING	ADVANCED MANUFACTURING	BUILT ENVIRONMENT	SEA TRANSPORT	CONSUMER CHEMICALS
Food Innovation & Resource Centre	Advanced Manufacturing Centre	Digital Building Innovation Centre	Centre of Excellence in Maritime Safety	Consumer Chemicals Technology Centre

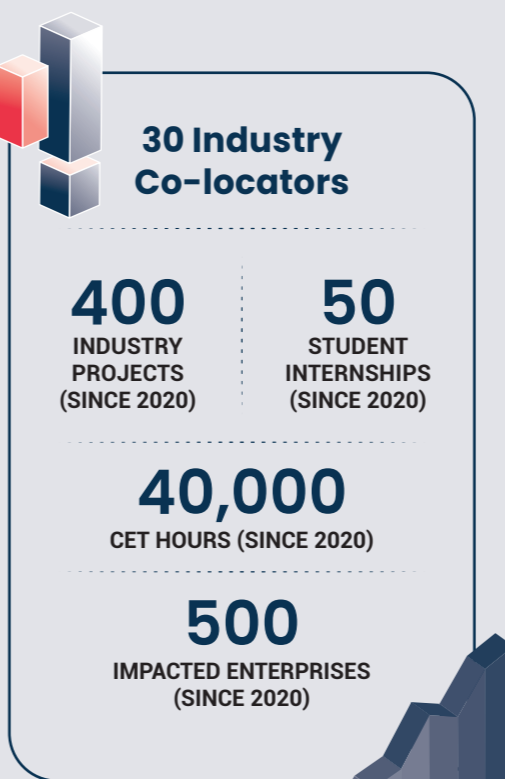
Cross-domain Capabilities

HUMAN RESOURCE MANAGEMENT	DESIGN THINKING	DATA ANALYTICS & AI	NETWORKS & IoT	ADVANCED MATERIALS	SUSTAINABILITY	WORKPLACE LEARNING
Business Innovation Centre	User Experience Centre	Data Science & Analytics Centre	5G&AIoT Centre	Advanced Materials Technology Centre	Centre for Environmental Sustainability & Energy Efficiency	NACE@SP

CO-LOCATION "INDUSTRY ON CAMPUS"

In its commitment to preparing for future industry disruptions, SP bridges the gap through co-location—a initiative that brings the industry directly onto campus.

With 30 co-locators, this innovative approach to education and industry collaboration cultivates a new generation of skilled professionals poised to tackle diverse challenges. SP's co-location partnerships extend across various industries, encompassing food and advanced manufacturing, electronics, AIoT, built environment, consumer chemicals, info-communications technology, artificial intelligence, analytics, human capital, and optometry.



Co-locators

- Advantest Singapore
- AI Singapore
- Biocreations Asia
- Bosch Rexroth
- CHINT Global
- Denova Sciences
- Ericsson
- EssilorLuxottica Asia Pacific
- Infineon Technologies Asia Pacific
- Jamco Aero Design & Engineering
- Kalsec
- Kosmode Health
- Mycosortia
- Mycrocell
- NUS Metics
- PERSOLKELLY
- PT Mega Surya Mas
- Robert Bosch
- Sembcorp
- ShenHao Singapore
- SICK
- Siemens
- Singtel
- Smart i4.0 Transformation Alliance
- Sol Drama Entertainment
- ST Engineering Land Systems
- Superstructure
- Three Essentials
- TIBCO Software Incorporated
- ZEISS Singapore



COMPANY & WORKFORCE TRANSFORMATION

TRANSFORMATION MADE POSSIBLE WITH SINGAPORE POLYTECHNIC

At Singapore Polytechnic, we are committed to supporting industry transformation. Driven by our Industry Exchange Model, we are charting strategic partnerships with industry players to create mindshare and foster value exchange.

An integrated playbook for enterprise transformation, SP offers end-to-end solutions through 12 SP centres in consultancy, technology, and workplace learning.

PEDAGOGICAL MODEL APPROACH

SP's Pedagogical Approach of Changing Mindsets, Deepening Skillsets, and Changing Behaviours brings together a diverse group of industry experts, standardisation bodies, and solution providers to accelerate industry transformation at any stage.

Mindset

The foundation of successful industry transformation lies within. Embracing a transformative mindset is crucial for companies striving for success. SP's diverse programmes, strategically designed for various leadership levels, dispel misconceptions and address challenges in industry transformation. This empowers business owners and their

employees to actively build a concrete understanding, allay fears, overcome resistance, and envision possibilities associated with transformation.

Skillset

Training Intervention
Building on a transformed mindset, SP provides cost-effective solution packages, to deepen workforce skillsets through application-based training. This training equips companies with valuable skills, catalysing and sustaining effective industry transformation.

Solutioning Intervention
Enterprises can leverage SP's 12 consultancy and technology innovation centres to address specific concerns, strategically harnessing emerging technology and innovation for sustained organisational change.

Behaviour

Finally, cultivating a new way of working is fundamental. At SP, we drive behaviour transformation by institutionalising innovative work methods through strategic business strategy transformation, process redesign, job restructuring, and the integration of technology and innovation.

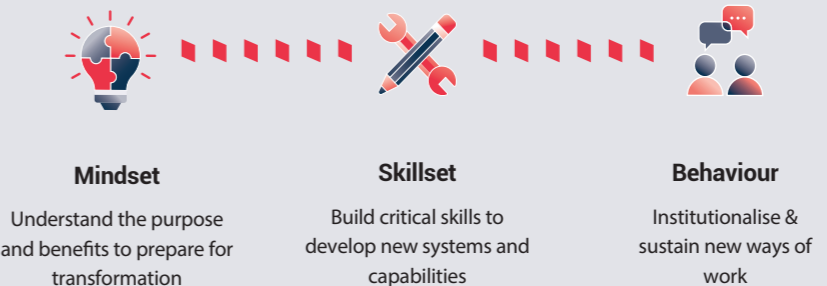
Facilitating culture change and effective change management ensures a seamless adoption of these fresh approaches within organizations, contributing to sustained growth.

SP COMPANY & WORKFORCE TRANSFORMATION

Integrated Playbook

End-to-end Solutions for Enterprise Transformation Presented by 12 SP Centres

SP PEDAGOGICAL FRAMEWORK



COMPANY TRANSFORMATION

SP prepares an enterprise for growth and transformation through:

- Needs Analysis
- Strategic Roadmapping

WORKFORCE TRANSFORMATION

SP accelerates an enterprise's agility by building capabilities through:

- Best-in-Class Programmes
- Learning Journeys
- Workforce Training
- Workplace Learning

- SP empowers an enterprise with productivity gains through the adoption of Technology, Innovation and Sustainability in:
- Manufacturing
 - Built Environment
 - Trade & Connectivity
 - Essential Domestic Services
 - Modern Services
 - Lifestyle

SP CWT END-TO-END SOLUTIONING

Solution Implementation

Implement diverse solutions, including consultancy, project-based training, job redesign, and workplace training, to upskill and reskill the enterprise workforce through Continuing Education and Training (CET) programmes.

Needs Analysis

Identify the enterprise's needs, pain points, and problem statements while envisioning transformation plans.

Solution Scoping and Design

Conduct comprehensive solution scoping for both (i) technological transformation and (ii) workforce transformation. Develop solution designs tailored to meet the enterprise's needs, accompanied by recommendations on suitable funding schemes.