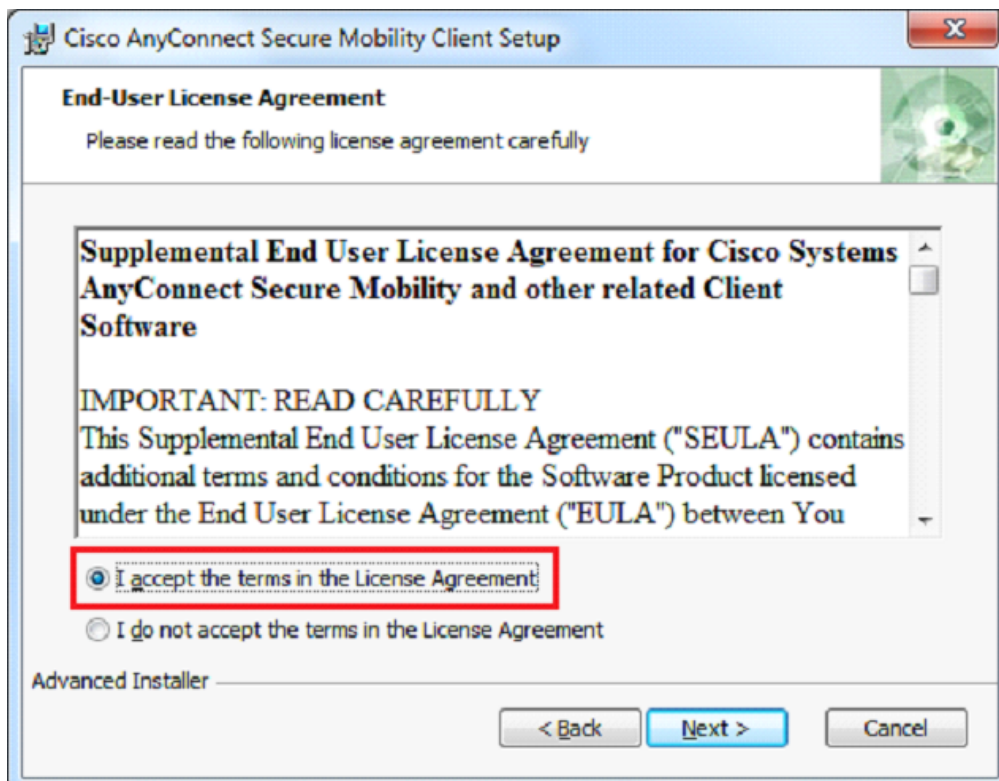


Quick Reference Guide for SSL VPN

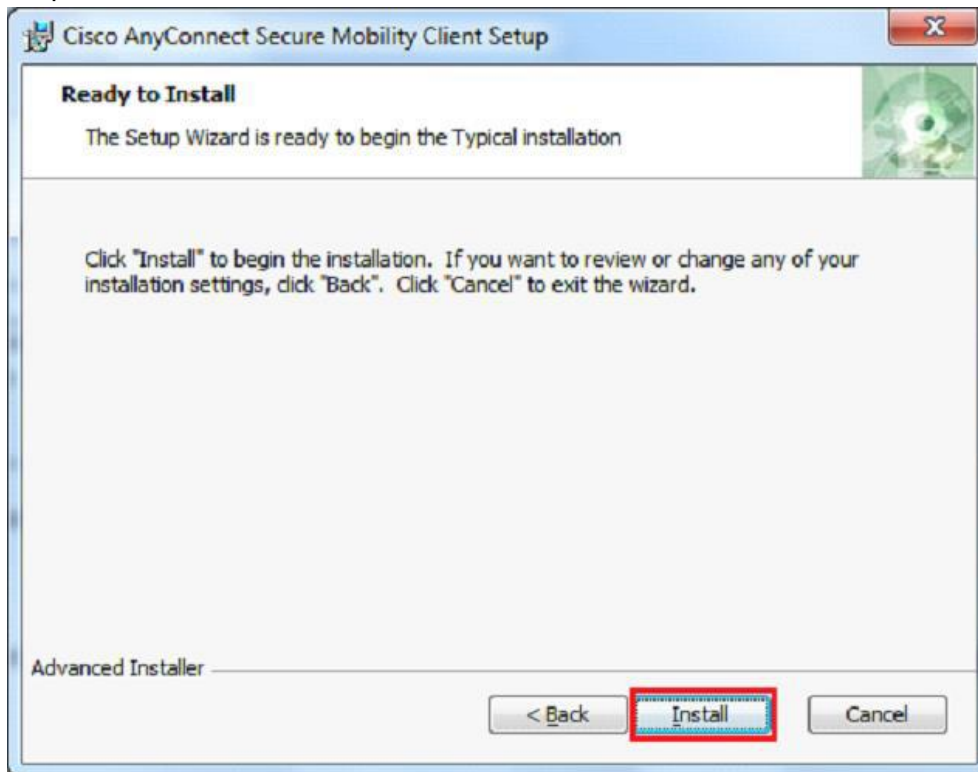
Step 1: Double click on **AnyConnect Secure Mobility Client MSI Package** and click on **Next** button.



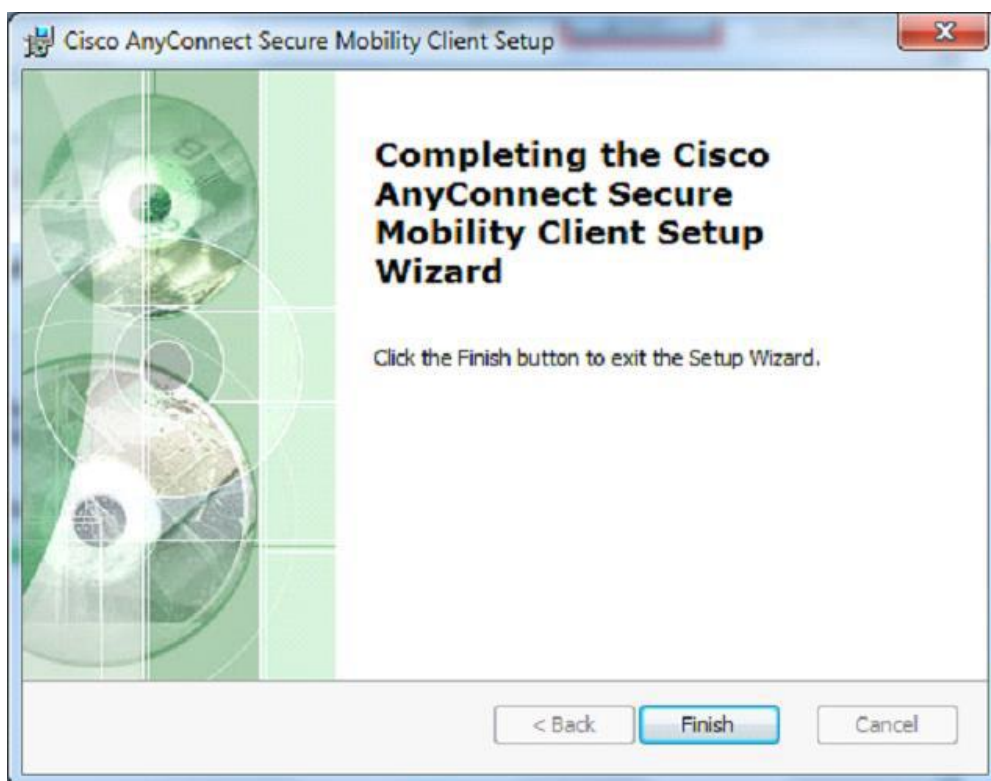
Step 2: Select "I accept the terms in the License Agreement" option and click on **Next** button.



Step 3: Click on **Install** button

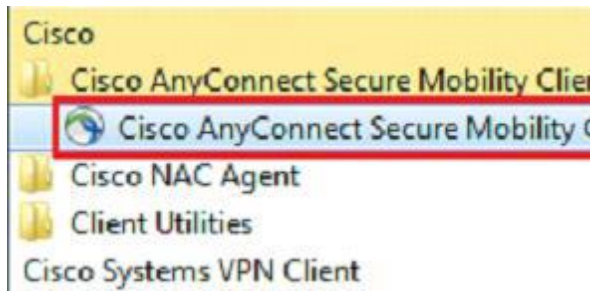


Step 4: Click on **Finish** button to complete the installation process.

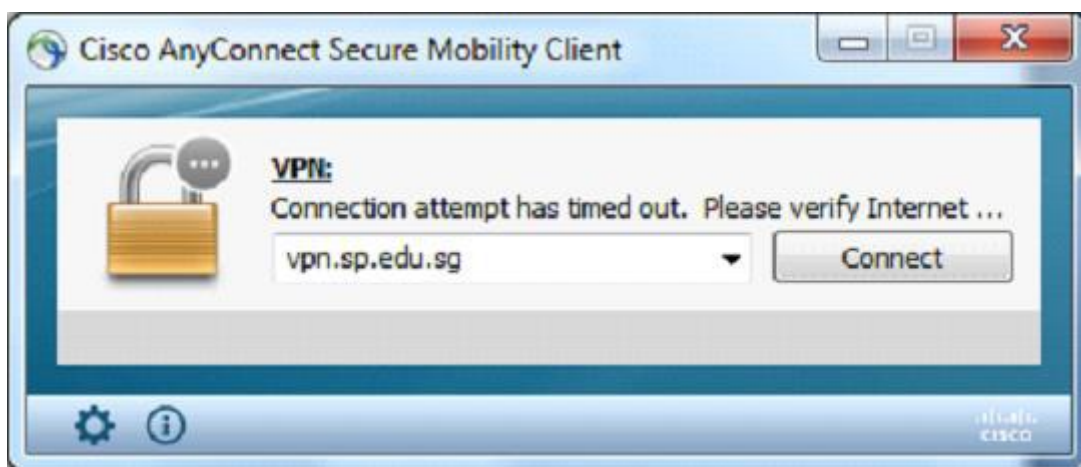


To Launch Cisco AnyConnect VPN Client Follow below procedure.

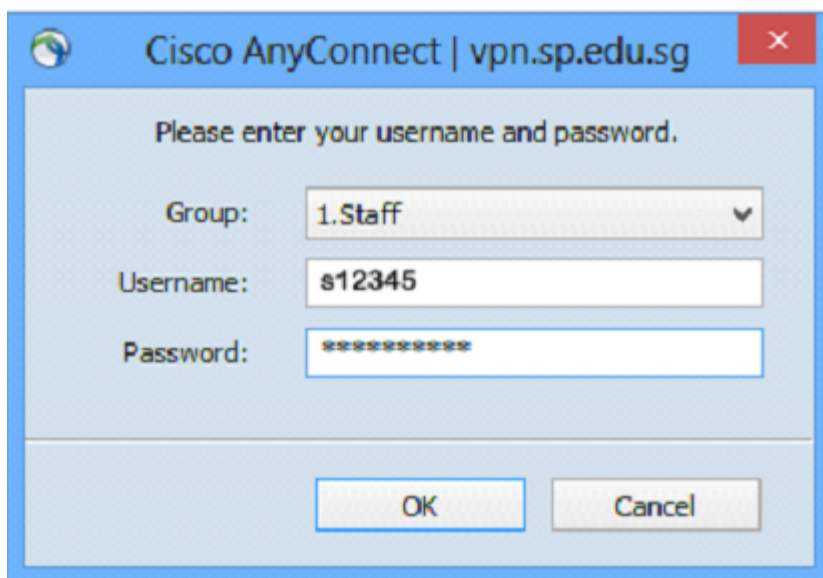
Step A: Click Start button → All Programs → Cisco → Cisco AnyConnect Secure Mobility Client → Cisco AnyConnect Secure Mobility Client to launch SSL VPN



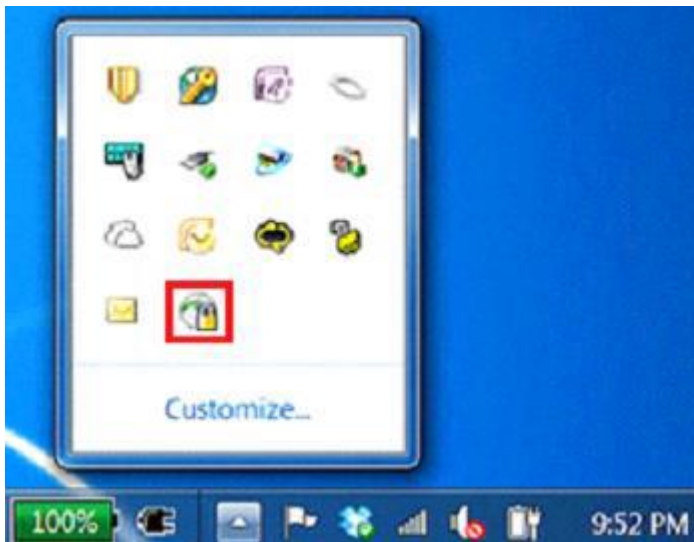
Step B - Choose "vpn.sp.edu.sg" and click "Select".



Step C - Select Group "Staff" or "Student" and enter your SPICE user account & password and click on **Connect** button



Step D: To disconnect from SSL VPN, right click on the icon and click “Disconnect”.



- Uncheck “Start VPN when AnyConnect is Started”



- Disable it to run at Start-up

